

WELCOME

Thank you for choosing **Sterizon wiZit** handheld device for your wireless data collection needs. We hope that you are completely satisfied with the product. Please visit <http://www.sterizon.com> for the latest version of this document, End User License Agreement, Copyrights, Warranty, Disclaimers, Safety Warnings, Help, and FAQ.

GETTING STARTED

Powering Sterizon wiZit On and Off

Press the green Power Button to power up the device. Once the unit is powered up, the only way to power down the unit is through the Menu Mode. Press the Menu Escape key (smiley key below power button) to access the menu, and select **wiZit! > Poweroff**. On the Poweroff confirmation panel, select **Yes** and press enter to shutdown the unit. **NOTE:** The Power Button cannot be used to power down the unit to avoid end users from shutting down the unit.

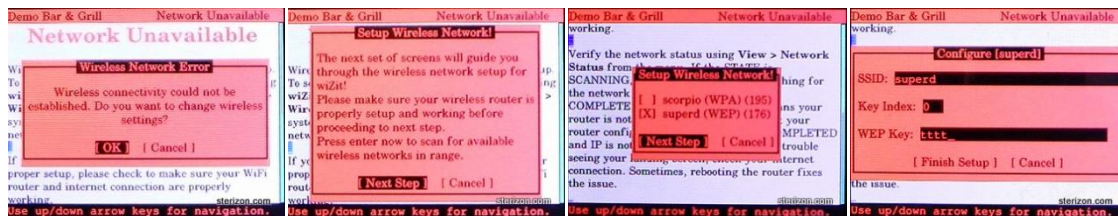
Charging the battery

Plug the AC-Adapter into the DC input jack on the back side of the unit and into an AC Power outlet and power on the unit for the battery to charge. Sterizon wiZit Handheld can be used while it is being charged. The Lithium Ion battery in Sterizon wiZit Handheld should be charged for 2 hours before portable use.

First Time Use and Wireless Network Setup

Sterizon wiZit device arrives pre-installed with latest software and pre-configured for your business location. You must configure the device to connect to your Wi-Fi/Wireless Network before it can be used. Once configured, the device will automatically connect to the same network unless you manually change it. To use your Sterizon wiZit Handheld, you must be near an IEEE 802.11b or IEEE 802.11g wireless networks (Wi-Fi network) which is either OPEN or WPA or WEP encrypted. For use at your business or home, you will need the wireless access point or router that is connected to a broadband Internet service (such as Cable or DSL). You'll need a Wi-Fi spot that doesn't require you to pay a subscription fee or requires additional login credentials beyond the WPA/WEP password.

If the network was not setup or network connection could not be established during power up, you'll be redirected to the "Network Unavailable" screen instead of Home Screen and a "Setup Wireless Network" dialog will popup to walk you through the Wi-Fi network setup process.



To setup or change a wireless network at any time, you must first Login into the device using **wiZit! > Login** with password **visit** to access Admin Mode. Up on successful login, from the menu, select **Setup > Setup Wireless**. "Setup Wireless Network" dialog will popup to walk you through the Wi-Fi network setup process.



Select "Next Step" and press Enter to scan for the available wireless networks in range. Navigate to your wireless network from the available networks list by pressing up/down arrow and press space bar to select it and press enter on "Next Step" to continue. Depending on the network security settings, you'll be prompted with SSID (pre-filled with the network SSID you selected from previous step) and optionally Password (for WEP and WPA networks). Enter your password and select "Finish Setup" and press Enter. You'll be asked to restart the unit to finish the setup process. If the setup was successful, after reboot, you'll be automatically directed to the Home Screen. If you still see "Network Unavailable" screen, your setup did not succeed. Repeat the above steps to properly setup the wireless network.

KEYBOARD & KEYS

Sterizon wiZit device has a complete QWERTY keyboard for navigation and data entry.



Key	Effect
	Power Button - Power up the unit.
	Escape, Smiley - Press to toggle between Menu Mode and Normal Mode.
(OR)	Enter - Press to Submit or Take Action or Select Menu Option/Item.
	ALT - Use in combination with other keys for Symbols & Numbers. Press and Hold the ALT Key and press any other key.
	SHIFT - Use in combination with other keys for Upper Case Letters. Press and Hold the Shift Key and press any other key.
	Backspace - Delete Input
(OR)	. [Dot / Period] - Found on the right bottom corner of the keyboard. Also found on the top to the left of the Arrow Key Pad.
	Up Arrow - Move to previous field, Move cursor up, Move menu selection up Down Arrow - Move to next field, Move cursor down, Move menu selection down Left Arrow - Move cursor to left, Move menu selection to left Right Arrow - Move cursor to right, Move menu selection to right Center Knob - Acts as Enter Key, Menu Item Selection, Drop Down Item Selection
ALT + F (OR)	@ [AT] - Used in Email Addresses. Also the square button on the top center of the keyboard.
ALT + L	- [Hyphen]
ALT + N	_ [Underscore]
ALT + Q	1 [Number 1]
A	a [Lower Case a]
SHIFT + A	A [Upper Case A]
SPACE	[Space] - Also, used for selecting CHECKBOX or RADIO button in Menu Mode.